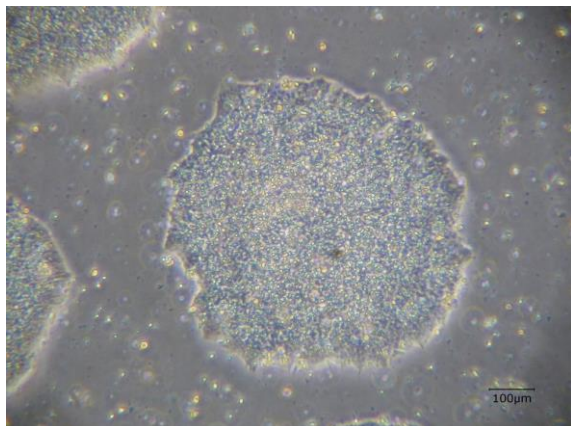
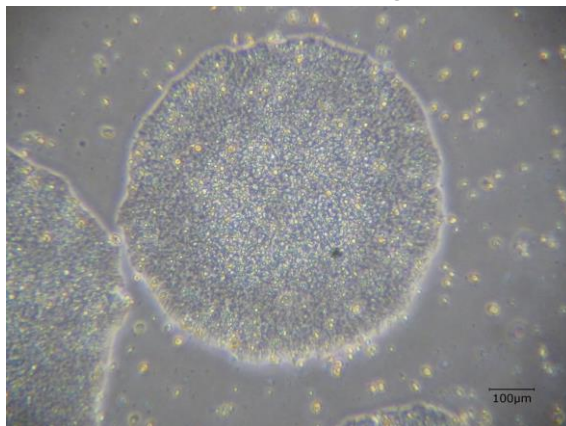


【 CiRA-j-1264 】 Morphology of iPSC colonies

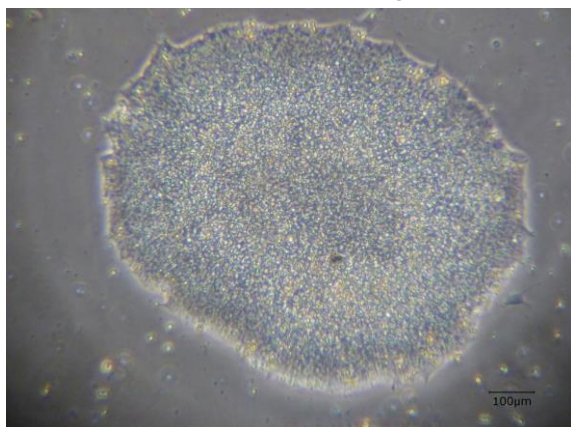
CiRA-j-1264-A: passage-3



CiRA-j-1264-B: passage-3



CiRA-j-1264-C: passage-3



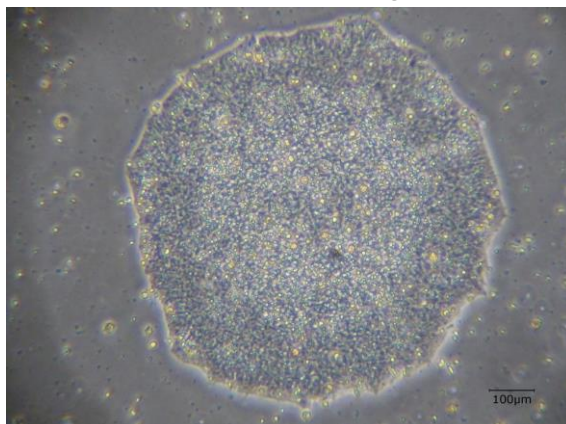
CiRA-j-1264-D: passage-3



CiRA-j-1264-E: passage-3



CiRA-j-1264-F: passage-3



(All images were captured at 4x magnification)